

DISC BRUSH

GENERAL FEATURES OF DISC BRUSH

- DISC brushes are particularly suitable for DeBurring, the burr generated by milling cutters on any flat and sizable recessed components made from any metals, non-metals and composite.
- Cost effective and ideal for custom designed machines

DISC BRUSH SPECIFICATION

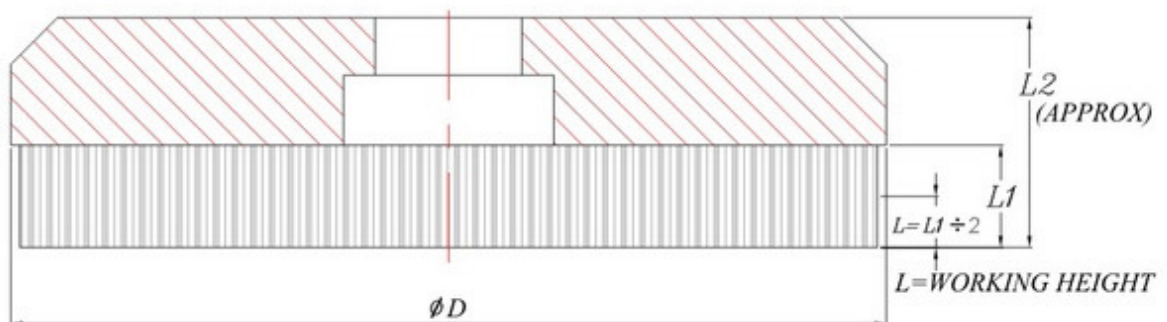
- **Diameter:** All Disc brush is available from 50mm to 300mm diameter as standard. Higher or lesser diameter is also available as per customer and job requirement.
- **Grits:** Available from 36 to 1000. Non- std includes 24, 150 ; 400 ; 1800 etc. Higher or lower grit variation is also available.
- **Filament types:** Silicon Carbide, Ceramic, Aluminum Oxide; Diamond and special material for Dry DeBurring application.
- **Working height:** 12mm ; 15mm ; 18mm ; 25mm ; 30mm and 38mm standard. Working height can be shortened or lengthen varying on application need and other parameters
- **Filament Dia.:** Depending upon grit and filament type it varies. Normal standard grits of Silicon carbide are available in 0.25 to 2.0 mm thickness. Variation of thick or thin filament is available depending upon application , metal and burr size

APPLICATION:

- Removing burrs, blending tool marks and finishing flat machined surfaces.
- Punched Components, where heavy burrs are generated.
- DeBurring face milled surfaces and DeBurring parts that have specific surface finish requirements.
- Remove or reduce the Milling marks.
- Edge RADIUSING.

ADVANTAGE OF IMEXSU'S DISC BRUSH

- *High safety due to molded and CNC machined body from Strong Engineering Plastic.*
- *Vast product range* – variation in filament material, 80 to 320 std. grits, coarse grits and fine grits, size, and shapes to cater each individual need separately
- *Easy to mount* on our patent pending holders, reducing set up cost and downtime. (Just one Allen key).
- *Adaptable to all standard machining centers* viz. VMC, HMC, FMC, CNC, and Robots & Automations to suit the standard holders.



All Dimension are Approximates